

DESCRIPTION

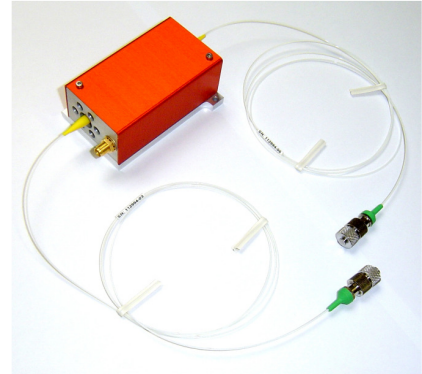
This fiber pigtailed modulator is dedicated to visible lasers such as **488 and 532 nm**.

FEATURES

- Polarization Maintaining or Single Mode fiber
- FC/APC or Super FC/PC connector
- High extinction ratio

APPLICATIONS

- Fast optical shutter
- Frequency shifter @ 200 MHz +/- 7.5 MHz
- Pulse Picking
- Q-switch (fiber laser)



Parameter	Unit	Rating	Conditions
Material-Acoustic mode-Velocity		TeO ₂ - [L] - 4200 m/s	
Optical Wavelength range	nm	Single wavelength in [478... 630]	
Input / Output Polarization		Linear / Linear with PM fiber Random / Random with SM fiber	
Polarization Dependence Losses	dB	< 0.5	
AO Light Frequency shift	MHz	« +1 » order : + 200	
Total Insertion Losses	dB	< 3 Nom 2	Including transmission through the crystal, diffraction efficiency and coupling losses
Extinction Ratio	dB	> 45 Nom 50	
Rise / Fall time	ns	≤ 18	
Fiber type		Single Mode or Polarization Maintaining	Input / Output
Fiber connector		Super FC/PC	
Fiber jacket		900 μm Hytrel tubing	
Pigtail length	m	1	
Max Input Laser power	W	0.1	CW
Input impedance	Ω	Nom 50	
V.S.W.R.		Nom < 1.2/1	
RF Power / Connector	W	≤ 1.4 / SMA	
Size / Weight	mm ³	(LxIxh) 74 x 52 x 34.4 mm ³ / 250 g	IN PRO 105
Operating Temperature	°C	+10 to +40	Non condensing
Storage Temperature	°C	-40 to +50	Non condensing

Options / On request

FIBER JACKET	<input checked="" type="checkbox"/> PVC 3 mm	<input checked="" type="checkbox"/> Stainless steel 3 mm
FIBER CONNECTOR	<input checked="" type="checkbox"/> FC/APC	<input checked="" type="checkbox"/> SMA
PIGTAIL LENGTH	<input checked="" type="checkbox"/> 2 m	<input checked="" type="checkbox"/> Other
FREQUENCY SHIFT	<input checked="" type="checkbox"/> « - » 200 MHz	

HOW TO DETERMINE THE REFERENCE OF YOUR MODEL:

MT200-BG18-FIO-PM-J1-A-s(-)

FIBER TYPE

- **SM** Single Mode
- **PM** Polarization Maintaining

FIBER JACKET

- **J1** 900 μ m Hytrel tubing
- **J3V** 3 mm PVC
- **J3S** 3 mm stainless steel

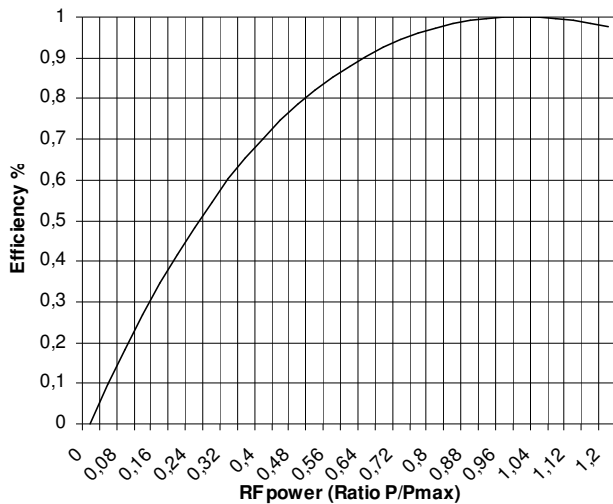
FREQUENCY SHIFT

- **s(-)** Negative

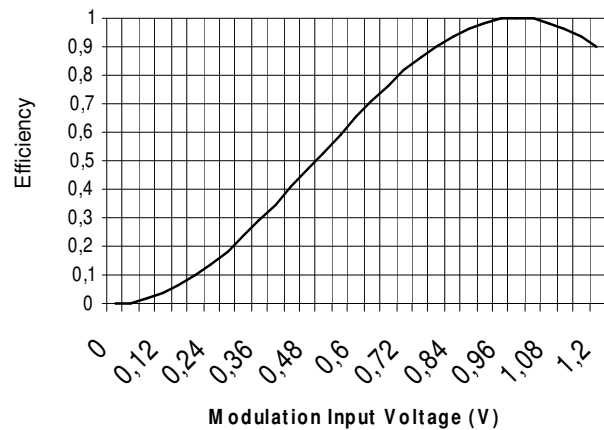
FIBER CONNECTOR

- **A** FC/APC
- **S** Super FC/PC
- **S905** SMA-905

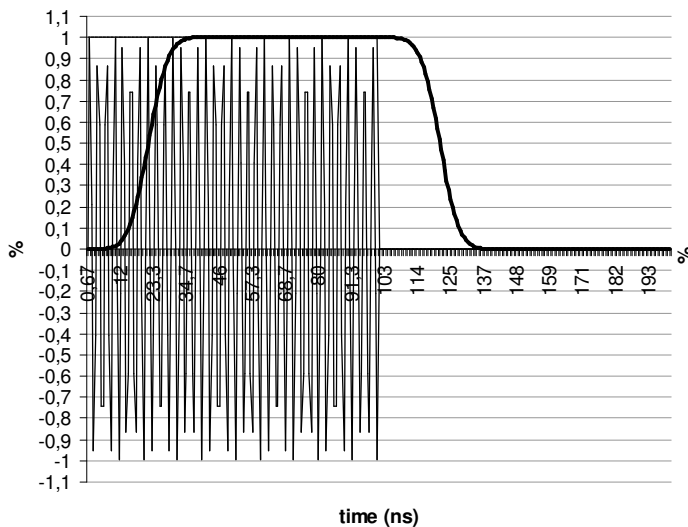
Relative Diffraction Efficiency versus RF power



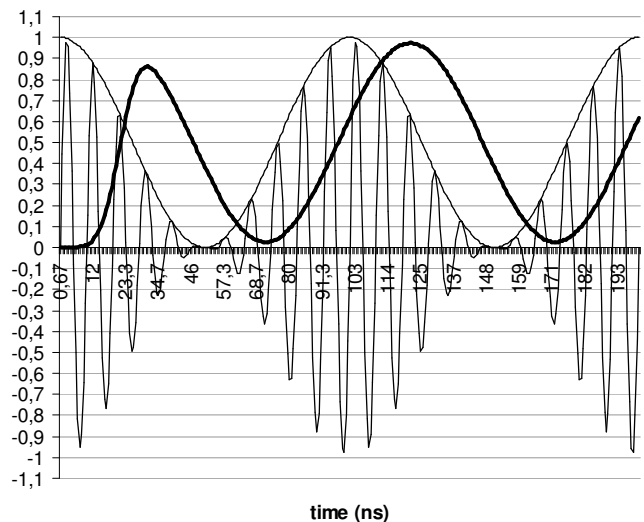
Relative Diffraction Efficiency response versus Input voltage (Video In)

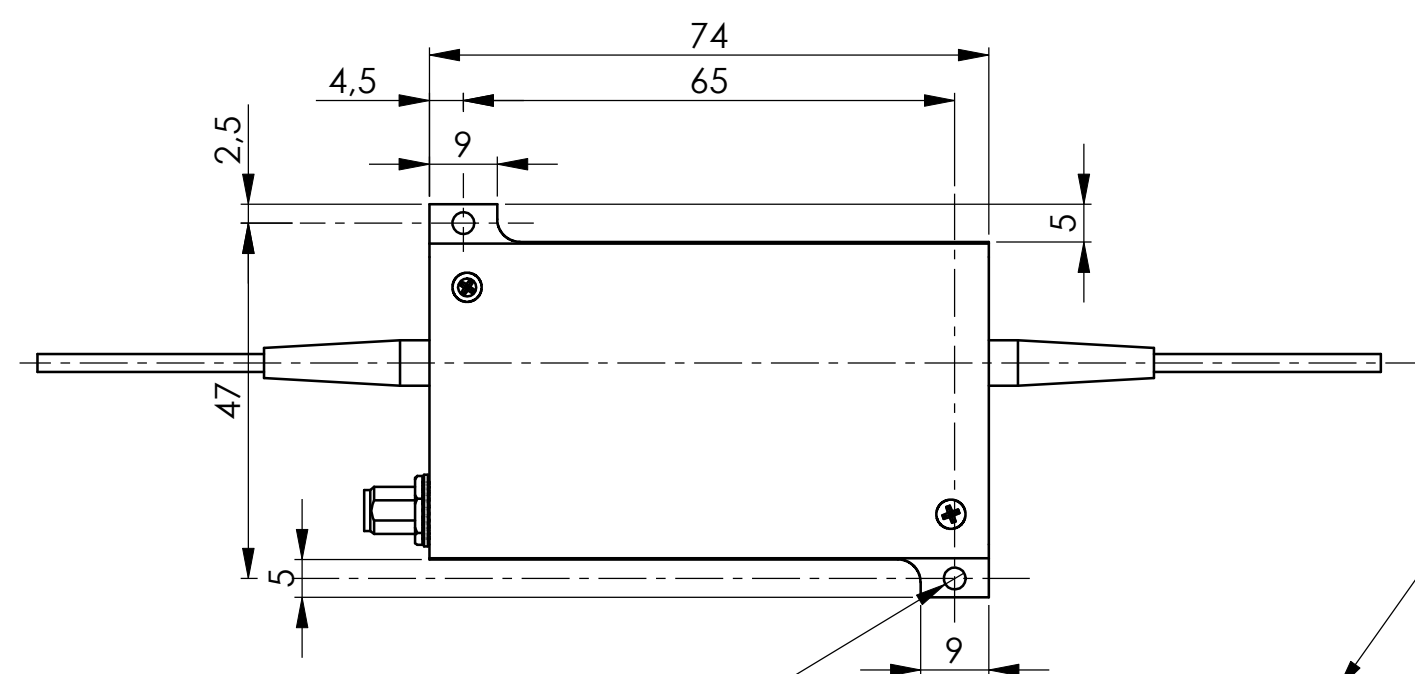
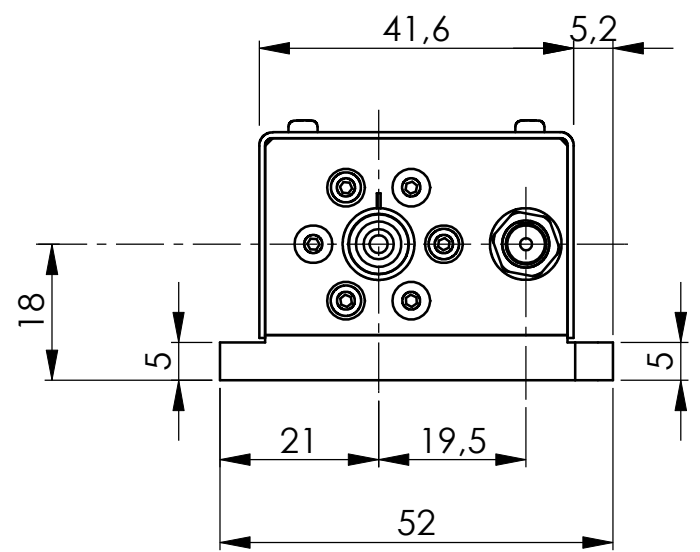
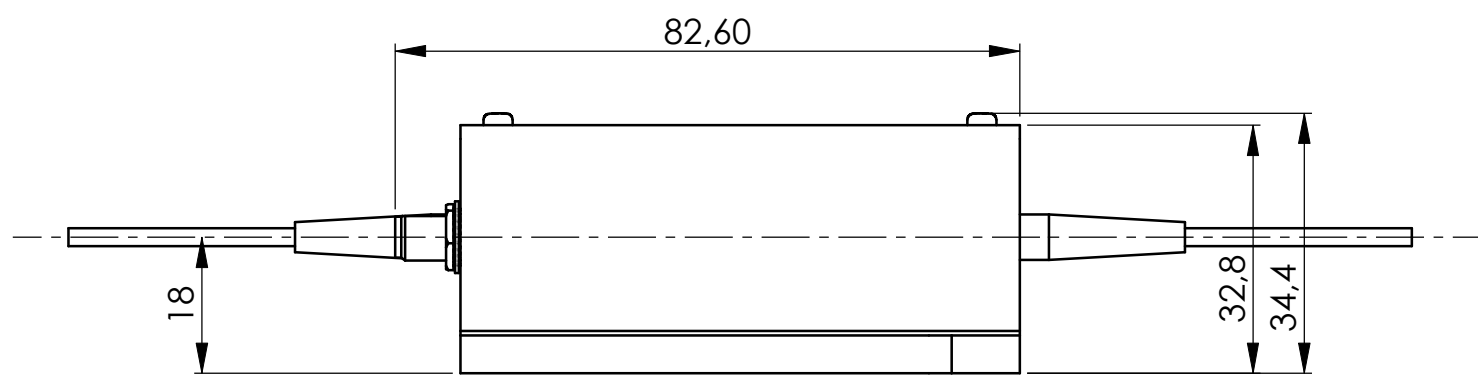


AOM temporal response

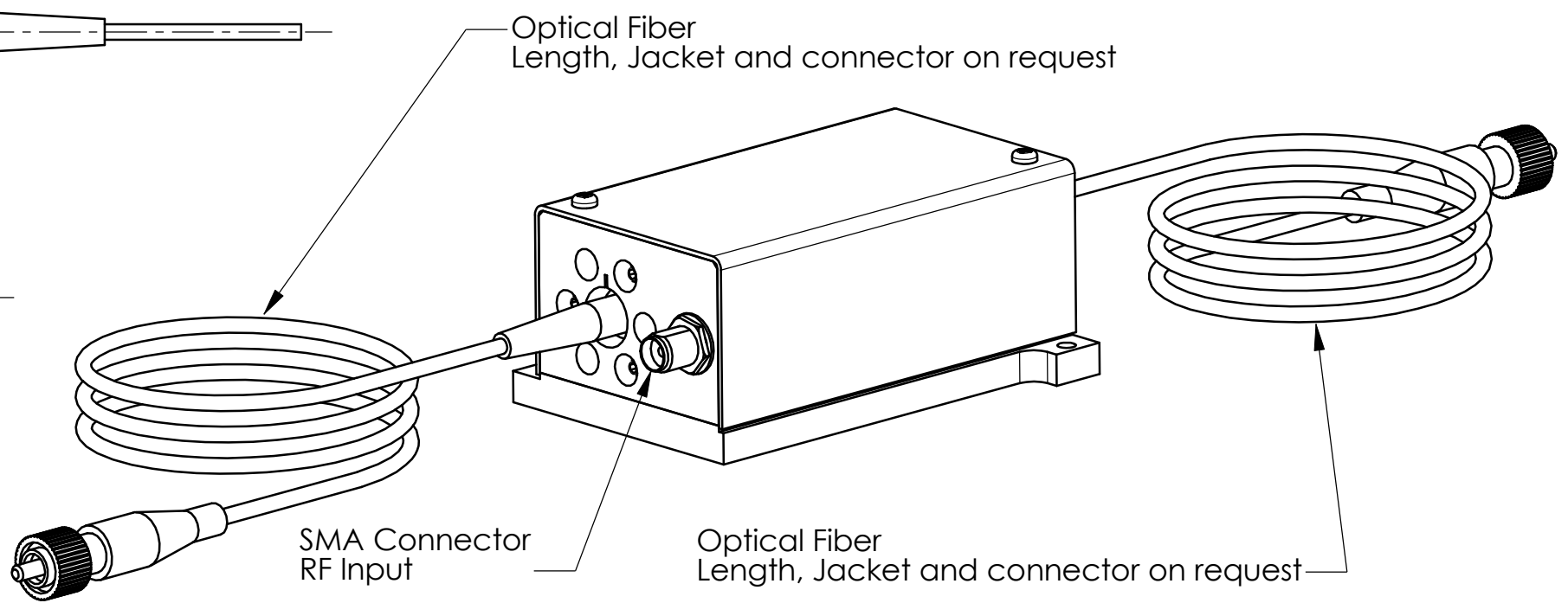


AOM temporal response





2 Mounting Holes $\phi 2,9$ Through



B	15/02/07	E.D	Mise en plan
A	22/05/06	A.A	Plan initial / Initial Drawing
Indice Index	Date	Auteur Author	Modifications
Conception Design	E.D	PLAN D'INTERFACE / OUTLINE DRAWING	
Vérification Checking	L.F		
Tolérance Tolerance	ISO 2768mK	Référence / Reference	
Echelle Scale	1:1	IN-PRO-105	
	Format A3	Ce document est la propriété de A.A.S.A. Il est strictement interdit de reproduire ce document ou une partie sans l'autorisation de A.A.S.A. This document is the property of A.A.S.A. It is strictly prohibited to reproduce this document or a part without the authorization of A.A.S.A.	
		Folio / Sheet 1/1	Indice / Index B

